

Qualität mit System

Naval Shipyards



GIFAS
ELECTRIC

951N Low voltage LED enclosed lantern



Main features:

- Transparent self-extinguishing shatterproof polycarbonate screen
- Selfextinguishing shatterproof polyamide upper covers.
- Selfextinguishing, shock-proof, resistant to strong thermal excursion
- 2x6mm² input twin cable, continuation line through RCG7 paragraph

Technical specs

Max voltage	24V/ 48V
Power	up to 60W
Protection degree	IP44
Insulation class	II
Weight	0,8 kg
Compliant with	CEI EN 60598-1 / CEI EN 60598-2-4

Code	Item	Description
128647	951N-E27-RCG7	951N lantern MAX 60W E27 Lamp holder and RCG7 pantograph suitable for 2x6mm ² cables(lamp not included)
127201	951N-E27-RCG7LED	Low rim 951N lantern E27 with LED 48Vac/dc 12W lamp and RCG7 pantograph suitable for 2x6mm ² cables
127597	951N-E27-RCG7LED24	Low rim 951N lantern E27 with LED 24Vac/dc 12W lamp and RCG7 pantograph suitable for 2x6mm ² cables

Pannocchia LED

10W low voltage Lantern for standard lighting and emergency function



Standard version



Em. funct. version

Lantern:

- Milky-white self-extinguishing shatterproof polycarbonate screen
- Selfextinguishing shatterproof polyamide upper covers (low rimmed black for standard lighting, high rimmed orange for lantern featuring emergency function).
- AISI 304 Stainless steel captive screws.
- 360° light beam.
- 5 integrated high efficiency LED light sources equipped on a die cast aluminium heat sink.
- Emergency function reset through reed magnetic reed.

Technical specs standard version:

- Voltage:	48Vac (36÷50Vac)
- Power:	10W
- Color temperature:	5700K
- Luminous flux:	1800lumen
- Protection degree:	IP44 (while coupled with the cable)
- Insulation class:	III
- Dimensions HxD:	210x108mm

Pantograph suitable for 6mm² or 25mm² cables

- Polyamide 6 frame with 20% fiberglass (PA6+20%F.G.) high resistance to traction, compression and flexure.
- Stainless steel screws.
- Special alloy steel spikes max corrosion and thermal resistance (UNI 6900-71; AISI 316).
- Fastening captive screws and 180° rotating cover

Technical specs emergency function version:

- Voltage:	48Vac (36÷50Vac)
- Power:	10W
- Color temperature:	5700K
- Luminous flux:	1800lumen (Standard lighting) 1500lumen (Emergency function)
- Battery:	Li-Ion 10,8V – 2600mAh
- Em. function duration:	1h + 15min
- Charge time:	4h
- Protection degree:	IP44 (while coupled with the cable)
- Insulation class:	III
- Dimensions HxD:	290x108mm



Code	Item	Description
148932	951-PANN-48V-RCG7	951 Pannocchia 48V - 10W - 1800lm with RCG7 suitable for 6mm ² cables
149322	951PANN48VEMERCG6	951 Pannocchia 48V - 10W - 1800lm EME with RCG6 suitable for 6mm ² cables
150130	951-PANN-48V-RCG3	951 Pannocchia 48V - 10W - 1800lm with RCG3 suitable for 25mm ² cables
150131	951PANN48VEMERCG1	951 Pannocchia 48V - 10W - 1800lm EME with RCG1 suitable for 25mm ² cables

953

Cage protected lantern with pantograph



Main features:

- Protective cage made out of self extinguishing Polyesrer, a shock and thermal resistant material which ensures a longer durability of the products also thanks to a shape which prevents accidental contacts with surfaces.
- Coils shaped power cord protection to prevent damage and grant a longer durability.
- Suitable for both LED and fluorescent IE27 bulb lamps

Technical specs

Max voltage	up to 230V
Power	100W
Weight	60g.

Code	Item	Description
105307	953/RCG7/5	953 lantern E27 Lamp holder 100W 0,3m 2x1,5mm ² cable and RCG7 pantograph suitable for 2x6mm ² cables
105303	953/C	953 lantern E27 Lamp holder 100W
100444	953	953 protective cage
100271	950.3	E27 lamp holder 100W

LED bulb lamp 12W E27



Main features

- Shock and vibration resistant
- Shock absorbing bulb
- Huge luminous flux
- High durability
- E27 connection

Technical specs:

Voltage	24/48Vac/dc
Power	10W - 11W
Luminous flux	1100lm - 1150lm
Luminous efficiency	100lm/W ca
Color temperature	Cold white 6000°K
Working temperature	-10°C / +40°C
Life	6.000h

Code	Item	Description
120051	LAMP.LED1224E27	Lampadina LED 11W 24Vac/dc E27
120054	LAMP.LED1248E27	Lampadina LED 10W 48Vac/dc E27

CEILING LIGHTS

IP65 Ceiling lights with daisy chain connection



Main features:

- Self extinguishing V2 polycarbonate frame, color grey RAL 7035
- Self extinguishing V2 polycarbonate screen, trasparente
- Gear-tray reflector unit in hot-galvanised steel, painted in white polyester fixed to the housing by means of steel rapid devices, hinged opening.
- Snug fit safety snap-lock clips for diffuser mounting in stainless steel,- screwdriver opening

Technical specs:

Max voltage	up to 230V
Power	2x18W - 2x36W
Protection degree	IP65
Dimensions (HxL)	2x18W 160X660mm 2x36W 160X1270mm

Code	Item	Description
128393	PL218FIL-SP81N	2x18W Ceiling light 230V 5m cable/plug 230V 16A 2P+T IP44 and 1m cable/socket 230V 16A 2P+T IP44
136889	PL236FIL-SP81N	2x36W Ceiling light 230V 5m cable/plug 230V 16A 2P+T IP44 and 1m cable/socket 230V 16A 2P+T IP44

GTF LED IP68 3 bar tube-encased lights



Main feature

- External methacrylate tube casing with satin finish to enable a smoother light diffusion and to avoid glare , external diameter of the tube 54mm , thickness 3mm, high mechanical resistance
- Lateral end covers in black PA66 fastened through a special PA66 nut and 3 O-ring gaskets in NBR.
- High efficiency LED light source
- Working temperature -25°C / +45°C
- Electronic driver specific for LED light sources
- Light beam 180°
- Color temperature 5.000°K (Natural white)
- Life up to 50.000 hours
- Protection degree: IP68 3 bar

Code	Item	Description
144399	GTFL22T48RCG7-W3	GTF LED PMMA tube-encased light 48Vac 22W IP68 3bar l.1803mm cable 5m pantograph suitable for 2x6mm ² cables
132788	GTFL36D24AM-RCG	GTF LED PMMA tube-encased light 24Vac 36W IP68 3bar l.1220mm cable 5m pantograph suitable for 2x6mm ² cables

988 Portable inspection work lights



Main features

- Thermoplastic handle and cap with shock-absorption rims
- Tubular external casing in polycarbonate with internal lining designed to enable a smoother light diffusion and to avoid glare
- Upper spinning hook to direct the light beam when the lamp is hanged
- Stainless steel wrappers; tear- and torsion-resistant cable gland
- On-board power supply
- Fluorescent DULUX or high efficiency LED light source
- Color temperature 5.000 °K
- Life up to 50.000 hours

Technical specs

Voltage:	24Vac - 230Vac
Power :	up to 36W
Protection degree:	IP55
Insulation class:	II

Code	Item	Description
105511	98880A181SN	988 portable inspection fluorescent work light 230V 18W IP55 5m cable 2x1mm ² plug 230Vac 16A IP67
128930	988L122A182SN	988 portable inspection LED work light 24Vac 12W IP55 5m cable 2x1mm ² plug 24Vac 16A IP67

940 Portable inspection work lights



Main features

- Thermoplastic handle and cap with shock-absorption rims
- ITubular external casing in polycarbonate with internal lining designed to enable a smoother light diffusion and to avoid glare
- Upper spinning hook to direct the light beam when the lamp is hanged
- Stainless steel wrappers; tear- and torsion-resistant cable gland
- On-board power supply
- Fluorescent light source

Technical specs

Voltage:	48Vac
Power:	Up to 36W G13 connection
Protection degree :	IP55
Insulation class:	II
Lenght:	1500mm

Code	Item	Description
105228	94034A-RCG7	940 portable inspection fluorescent work light 48Vac 36W IP55 cable 5m pantograph RCG7 suitable for 2x6mm ² cable

PrimaLED ITA 2.0 High-end portable worklamp



NEW
State of the art
LED Technology
100%
**MADE
IN
ITALY**

Technical specs

Voltage:	220÷240Vac 50/60Hz 20÷28Vac/dc 40÷58Vac/dc
Light source:	LED
Power:	25,2W
Color temperature:	5700K
Luminous flux:	4.200lm (165lm/W)
Protection degree:	IP65
Insulation class:	I (230V with socket) II (230V without socket) III (24/48V)
Impact protection	IK08
Working temperature:	-20°C / +40°C
Dimensions (LxHxW):	305x295x110 mm
Weight:	3,1 kg
Photobiological risk:	Exempt in compliance with EN 62471:2008 e IEC/TR 62788:2014

Main features

- 100% luminous flux emitted at power up
- Low power consumption and high luminous flux
- Heating up to a minimum
- No maintenance needed
- Extremely durable
- No UV / IR radiations
- Yellow polycarbonate rubber-rimmed shock resistant frame to ensure the sturdiness over time
- Multi purpose handle designed to make the lamp stand firmly on every ground
- Spare parts always stock on hand, the PrimaLED is repairable and retrofittable.
- Compliant with the usage in environments with mechanical moving parts
- Wide range of customizations available, e.g. daisy chain connections

PrimaLED

The famous portable worklamp GIFAS Electric Prima is now available with the latest LED technology, a giant leap forward in terms of efficiency, luminous flux, life, lack of maintenance and sturdiness in even the harshest environments

The PrimaLED is a **Made in Italy** portable worklamp especially designed for professional use, try it once and you'll never let go of it.

The PrimaLED was developed in compliance with years of on-field experience and in accordance with the feedback received over the time by the customers' base; it's more than just a portable worklamp.

If needed it can be easily fitted to ceilings, poles and any kind of structure including stands; the lamps works fine both horizontally and vertically.



Stand



Fittings accessories



Panel socket version

Code	Item	Description
151000	99530L5KA281SN	PrimaLED 230Vac 25,2W 4200lm 5700K-5m cable and CEE 230V IP67 plug
151003	99530L5KA781P81SN	PrimaLED 230Vac 25,2W 4200lm 5700K-5m cable and CEE 230V IP67plug/socket
151001	99532L5KA282SN	PrimaLED 20~28Vac 25,2W 4200lm 5700K-5m cable and CEE 24V IP67 plug
151004	99532L5KA382P82SN	PrimaLED 20~28Vac 25,2W 4200lm 5700K-5m cable and CEE 24V IP67 plug/socket
151002	99534L5KA283SN	PrimaLED 40~58Vac 25,2W 4200lm 5700K-5m cable and CEE 48V IP67 plug
151005	99534L5KA383P83SN	PrimaLED 40~58Vac 25,2W 4200lm 5700K-5m cable and CEE 48V IP67 plug/socket
100367	9950.18.00	U shaped steel fitting suitable for ceiling installations
100370	9950.21.00	U shaped steel fitting suitable for stands
105601	9950.22.00SA	U shaped steel fitting with 2 permanent magnets suitable for installation on any ferromagnetic surface
104426	717/3	Zinc-coated telescopic stand up to 1,85mt in height

3500 Portable safety transformers



Main features

- Hard butyl rubber shock resistant body
- Insulation class II
- Voltage input 230V o 400V
- Voltage output 24V-48V-230V
- Dimensions 350x290x280mm
- Input plug 230V/400V 16A IP67 3m H07RN-F cable

Code	Item	Input	Primary protection	Transformer	Secondary protection	Output	
131726	35V15041-SPSV	Plug 400V 16A 3P+T 3m H07RN-F cable	T/M Switch 2P 6A D-10kA	Voltage: 400V/48V Power: 1500VA	T/M Switch 1P 32A C-6kA	1 Socket 48V 32A 2P IP67	
102430	35V25051-SPSV	Plug 400V 16A 3P+T 3m H07RN-F cable	Fuse 2P 32A delayed	Primary: 400V/230V Power: 2500VA	Fuse 2P 32A fast	1 Socket 230V 16A 2P+T IP67	

7800 Portable safety transformers



Main features

- Hard butyl rubber shock resistant body
- Insulation class II
- Voltage input 230V o 400V
- Voltage output 24V-48V-230V
- Dimensions 610x446x240mm
- Input plug 230V/400V 16A IP67 3m H07RN-F cable

Code	Item	Input	Primary protection	Transformer	Secondary protection	Output	
136946	78V30042-SPSV	Plug 400V 16A 3P+T 3m H07RN-F cable	Fuse 2P 10A delayed	Voltage: 400V/48V Power: 3000VA	2 Fuse 2P 32A fast	2 Sockets 48V 32A 2P IP67	
132699	78V50043-SM	Plug 400V 16A 3P+T 3m H07RN-F cable	T/M Switch 2P 16A D-10kA	Primary: 400V/48V Power: 5000VA	3 T/M Switches 2P 32A C-6kA	3 sockets 48V 32A 2P IP67	
104918	78V40051SPSV	Plug 400V 16A 3P+T 3m H07RN-F cable	T/M Switch 2P 16A D-10kA	Tension: 400V/230V Power: 4000VA	T/M Switch 2P 16A C-6kA	1 Socket 230V 16A 2P+T IP67	

Wheeled transformers



Main features

- Stainless steel or tin-coated steel metal structure
- Insulation class II
- Voltage input 400V
- Voltage output 230V
- Dimensions 950x645x930mm
- Input plug 400V 32A IP67 3m H07RN-F cable

Code	Item	Input	Primary protection	Transformer	Secondary protection	Output	
106373	CAR1N12K53-SPSV1	Plug 400V 32A 3P+T 3m H07RN-F cable	T/M Switch 3P 32A D-10kA	Voltage: 400V/230V Power: 12.000VA	3 T/M Switches 2P 16A C-6kA	3 Sockets 230V 2P+T 16A IP67	



1700

Hard rubber portable power panels



Main features

- Hard butyl rubber shock resistant body
- Insulation class II
- Voltage input 48V
- Voltage output 48V
- Dimensions 200x82x63mm

Code	Item	Input	Protection	Output
101366	1703/P48/10	Plug 48V 16A 2P IP44 10m cable H07RN-F	-	3 sock. 48V 16A 2P IP44 
137028	1703/P48/3210	Plug 48V 32A 2P IP44 10m cable H07RN-F	-	3 sock. 48V 32A 2P IP44 

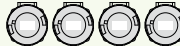

7300

Hard rubber portable power panels



Main features

- Hard butyl rubber shock resistant body
- Insulation class II
- Voltage input 48V
- Voltage output 48V
- Dimensions 200x350x132mm


Code	Item	Input	Continuation line	Main	Protection	Output
137041	73004Z/48	Terminal block 2P 10mm ²	-	Switch dis. 2P 32A	4 T/M Switches 2P 32A C-6kA	4 Sockets 48V 16A 2P IP44 
135949	73004G5/48SAL	600A Connector up to 70mm ² cables	600A Connector up to 70mm ² cables	Switch dis. 3P 32A	4 T/M Switches 2P 32A C-6kA	4 Sockets 48V 16A 2P IP44 

Junction boxes



Main features

- Hard butyl rubber shock resistant body
- Voltage input 48V
- Voltage output 48V
- Dimensions 84x72x61mm

Code	Item	Input	Continuation line	Protection	Output
108899	RCG6-421629FP	Pantograph 2x6mm ² cables	Pantograph 2x6mm ² cables	Fuse 2P 16A fast	Socket 48V 16A 2P IP44 

1516 Hard rubber portable power panels



Main features

- Hard butyl rubber shock resistant body
- Insulating class II
- Skintop cable gland with torsion- and tear-resistant device
- Safety: residual current circuit breaker with overcurrent protection
Icu=6kA curve C I_{dn}=0,03A
- CEE plugs and sockets in compliance with IEC 309-1/2
- Dimensions: 398x115x72mm
- Cable H07RN-F

Code	Item	Input	Protection	Output
101318	1516004/DS4	Plug 230V 16A 2P+T IP67 3m cable H07RN-F	Res. curr. c.b. with overc. prot. 1P+N 16A C-6kA I _{dn} =0,03A	4 Sockets 230V 16A 2P+T IP67

6200 Hard rubber portable power panels



Main features

- Hard butyl rubber shock resistant body
- Insulation class II
- Skintop cable gland with torsion- and tear-resistant device
- Safety: residual current circuit breaker with overcurrent protection
Icu=6kA curva C I_{dn}=0,03A
- CEE plugs and sockets in compliance with IEC 309-1/2
- Dimensions 280x255x230mm
- Cable H07RN-F

Code	Item	Input	Protection	Output
104245	62004/DS	Plug 230V 16A 2P+T IP67 3m cable H07RN-F	Res. curr. c.b. with overc. prot. 1P+N 16A C-6kA I _{dn} =0,03A	4 Sockets 230V 16A 2P+T IP67

7400 Hard rubber power panels



Main features

- Hard butyl rubber shock resistant body
- Insulation Class II
- Skintop cable gland with torsion- and tear-resistant device
- CEE plugs and sockets in compliance with IEC 309-1/2
- Dimensions 266x370x132mm
- Wall-mount fittings included


Code	Item	Input	Main	Protection	Output
125496	7440C6D	Terminal block 5P 10mm ²	Diff. Switch 4P 40A I _{dn} =0,03A	6 T/M Switches 1P+N 16A C-6kA	6 Sockets 230V 16A 2P+T IP67

"UNICA" SERIES Multipurpose energy columns

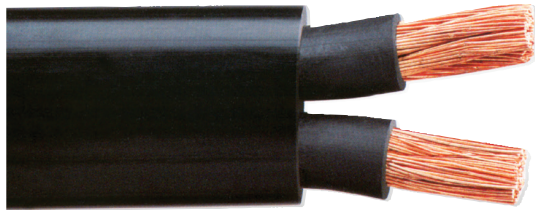


Main features

- Almost seamless one piece metal carpentry made out of stainless steel or other materials in accordance with the customers needs
- Screw-secured back door to connect the energy column to the electric grid
- Dimensions 270x900x200mm (WxHxT)
- Suitable for energy, water and air distribution
- Frontal panel sockets equipped on a hard butyl rubber shock resistant body, custom electrical configuration on demand
- Color palette (more colors available on demand):
 - Green RAL 6016
 - Blue RAL 5010
 - White RAL 9016
 - Grey RAL 7016
 - Yellow RAL 1018

Code	Item	Input	Main	Protection	Output
137057	UNZ0004S1-PSB900	Terminal block 5P 10mm ²	Switch discon. 4P 32A	6 Res. curr. c.b. w overc. prot 1P+N 16A C-6kA I _{dn} =0.03A	4 Sockets 230V 16A 2P+T IP67 

42FL Twin cables



GIFAS Electric twin cables conductors are made out of red electrolytic copper compliant with CEI 20-29 class 5. The external Jacket is made out of PVC type TM2 complying with CEI 20-11. The insulations of the internal wires is granted by a thermoplastic mix. The cable is resistant to oils an hydrocarbons and has also a high flextue and abrasion resistance.
Compliant with CEI 20-11, CEI 20-19, CEI20-29 standards

- Working temperature: -5° C / +70° C for mobile installations, -20° C / +80° C when installed
- Radius of curvature: 12 times the diameter

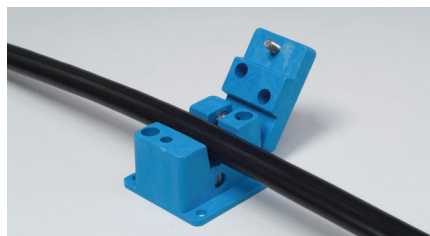
Code	Item	Section mm ²	Max external Ø.	Weight kg/100 m
102799	4260FL	2x6	16x8	20
102749	42250FL	2x25	25x17	72

RCG Pantographs



V0 self-extinguishing polyamide pantograph with high mechanical resistance.
AISI316 stainless steel teeth and hinge, AISI 304 stainless screws.
Captive screw and 180° tilting cover.
GIFAS Electric pantographs are available in 2 different versions, the first suitable for 2x6mm² cables, the other suitable for 2x25mm² cables.

Code	Item	Description
108895	RCG3	Winged pantograph suitable for 25mm ² cables
108901	RCG7	Winged pantograph suitable for 6mm ² cables



Cable protectors



Main features

- Quick mount system with integrated connections (plug/socket)
- High load bearing, resistant to oil, acid, petrol and short-term contact with solvents
- Insulating and skid proof
- Body and lid made out of polyurethane
- 3 channels cable protector
- Channels dimensions L=35mm, H=40mm
- Lid hinge
- Wedge closing system
- Load bearing capacity approx. 2t/400cm²

Code	Item	Description
105307	CRS.3P	3 channels polyurethane cable protector 1000x290X48mm 2t/400cm ²

Thermoplastic plugs and sockets



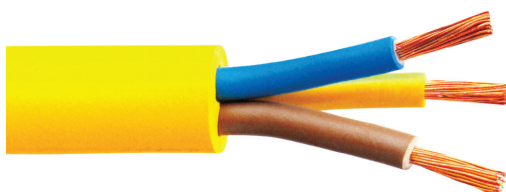
Main features

- High shock-resistant plastic plugs and sockets
- Compliant to IEC 309-1/2 IP44 standards
- The color varies in accordance with the supported voltage

Code	Item	Description
102722	421626.01	Pastic plug compliant with IEC 309-1/2 48V 16A 2P IP44
135340	421627.01	Plastic socket compliant with IEC 309-1/2 48V 16A 2P IP44
129238	423226.01	Pastic plug compliant with IEC 309-1/2 48V 32A 2P IP44
129239	423227.01	Plastic socket compliant with IEC 309-1/2 48V 32A 2P IP44
101844	241626.01	Pastic plug compliant with IEC 309-1/2 24V 16A 2P IP44
135477	241627.01	Plastic socket compliant with IEC 309-1/2 24V 16A 2P IP44

ELECTRIC CABLE

Electric cable H07RN-F GIFAPREN



Main features

- Compliant to IEC, CEI and VDE standards
- High oil-, acid-, abrasion-, torsion-, cut-, compression-, tear- and traction- resistance
- Customizable external cable jacket, even small lengths
- Multipolar neopren cable type H07RN-F
- Flexible rubber isolated conductors in annealed copper without tin coating
- Easy-to-spot external yellow cable jacket

Code	Item	Description
102689	4215/NEO	Gifapren yellow cable H07RN-F 2x1,5mm ²
102738	4225/NEO	Gifapren yellow cable H07RN-F 2x2,5mm ²
102831	4315/NEO	Gifapren yellow cable H07RN-F 3G1,5mm ²
102984	4325/NEO	Gifapren yellow cable H07RN-F 3G2,5mm ²



Qualität mit System

For more info and custom-tailored solutions
visit our website www.gifas.it



GIFAS
ELECTRIC

GIFAS Electric Srl
Vicolo Gumer 9
39100 Bolzano (BZ)

Tel. +39 0584 978211
Fax +39 0584 939924
www.gifas.it
sales@gifas.it

The products' outlook and the technical specs may vary. Rel.2109